

Mahindra
KUV₁₀₀



Mahindra
Rise.

**ENJOY YOUR DRIVE.
ENJOY YOUR LIFE**

3.70m



Aggressive and muscular, the first thing that it ignites is your imagination. Its SUV gutsiness hits you straight away, with a front end that encapsulates more than 70 years of history in the manufacture of off-roaders, complemented by the vertical thrust of the contours and the robustness of the lines. Yet the dimensions are compact, to make city living easier and a whole lot more fun.

At just 3,700 mm long, with a turning circle of 5.05 m, it moves you swiftly through the traffic and makes parking problem-free. The interior is surprisingly roomy, with five comfortable seats and all the space you need for your stuff. This is a car that has everything required to keep the whole family happy – not least because, with its perky 3-cylinder engine (1,198 cc / 82 HP), it can also be driven by those who have recently got their license. And it will never fail to catch admiring glances, with its out-of-the-ordinary design.





NO COMPARISON

The only feeling it doesn't summon up is...indifference.

Its decisive, emphatic lines embody its strong personality, where the clichés don't get a look in.

The compact shape seems ready to spring onto the road, while the lower headlamps and the striking contours set you dreaming about adventures off the beaten path.

The molded side panels accentuate the dynamism of the design and imbue the shape with an incessant rhythm.

Its sporty soul is highlighted by the 15" alloy wheels and two-tone paintwork (optional). More than anything else, this is a car that delivers emotions





1.655m

1.727m

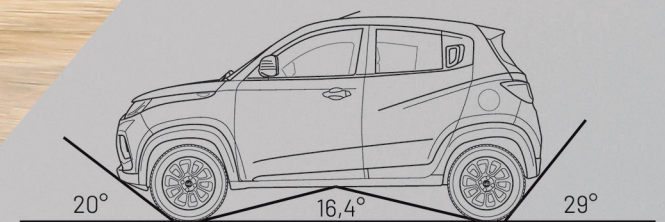




SOUL OF AN SUV

The dimensions are scaled for the traffic, but its Sport Utility Vehicle spirit emerges in all of the details, from the front and rear skid plates to the protective moldings on the car doors, and from the resin wheel arch eyebrows to the roof rail.

At the wheel of the KUV100, the horizon is further away.



approach angle 20° - ramp angle 16.4° - departure angle 29°

The excellent angles of the KUV100 make it easy to negotiate not only everyday obstacles such as potholes and cobblestones, but even dirt roads and tracks.



**THE SPACE
YOU DIDN'T EXPECT**

On board the KUV100, comfort is not just a concept, thanks to its intelligent design: the wheels are located at the edge of the frame, to exploit the full length of the interior.

The travel comfort is immediately evident, with an abundance of space for your shoulders and legs, which allows five adults to ride in comfort, even in the rear seats. The sense of relaxation is heightened by the entirely flat floor, with no tunnel, enabling greater freedom of movement.

And if you need to transport large items, just pull down the backrest and flip over the rear seat to increase the boot size from 243 to 473 liters.

The KUV100 can take everything, including all the kit for your hobbies.

The KUV100's focus on the driver and the passengers is evident in every detail, such as the rich array of storage compartments: every door features a water bottle holder, while sunglasses can be stored in the useful, easily accessible space above the rear-view mirror.

Given that the KUV100 will often accompany you on trips out of the city, there is also a refrigerated storage compartment (K8 only), to keep drinks and snacks fresh.

And if you've got something with you that may attract the attention of thieves, you can use the invisible space in front of the rear seat.

Because the KUV100 pampers you in myriad ways, both visible and invisible.



2.385m

The long, 2.385m wheelbase offers stability and surprising roominess.





EVERYTHING YOU COULD NEED OR WANT

Joystick-style gear stick

Right next to the steering wheel, it facilitates gear changes and frees up the space between the seats

Two-tone interior

The two-tone upholstery of the seats is stylish and sporty.

Two-tone door panels with fabric inserts

Standard on the K8 version.

Seat adjustment

The driving position is always ideal, thanks to the height-adjustable driver's seat.

Blue-shaded background lights

Standard on the K8, they increase visual comfort at night and create a very cool atmosphere.



ENGINE
START
STOP



LOOKING DOWN ON EVERY ROAD

At the wheel of the KUV100, dominating the road is more than a feeling.

The raised driving position allows you to monitor the situation and to anticipate potential dangers in the frenetic city traffic, whereas on dirt tracks you can rapidly select the best path to take.

On board the KUV100, you will always feel a little more SUV.





WRAP YOURSELF IN A PROTECTIVE SHELL

In the KUV100, the safety issue has been addressed from various perspectives, deploying both active and passive systems designed for all those both on board and off. The unibody frame is made from high-resistance steel, which forms an effective, highly protective shell.

The KUV100 looks after passengers with side impact bars; looks after children with ISOFIX (LATCH) attachment points for car seats; and looks after pedestrians with the tall boot that minimizes the effect of an impact.

A 360° focus that makes you feel safer on every trip.





We put your safety in the spotlight

In the KUV100, being able to see clearly, under all circumstances, is a given. The fog lamps come as standard, and the multifunction frontal LED DRLs project a very bright, deep beam, to see and be seen even when visibility is poor. In the event of a collision, rapid breaking or the opening of the boot, the emergency lights come on automatically.



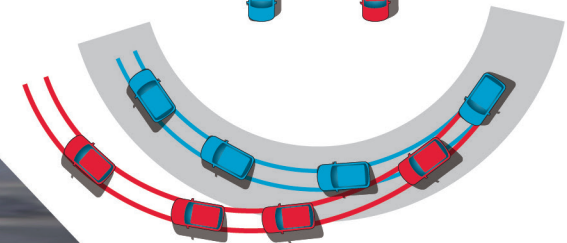
The importance of stopping on time

The gradual ABS braking with EBD (Electronic Brake Distribution) prevents the wheels from locking and offers an additional level of safety on wet, snow-covered or slippery surfaces, such as a carpet of autumn leaves.

WITH ESP



WITHOUT ESP



Always aligned with expectations

Following the right trajectories on bends is easy, thanks to the electronic ESP management with TCS (Traction Control System), which maintains the directionality of the car, even acting on the braking system if necessary.



THAT EXTRA BOOST, DAY IN, DAY OUT

The KUV100 offers you the boost that allows you to spring into action when the traffic lights turn green, or extricate your way quickly out of the traffic, but also handle hairpin bends in the mountains. It's all down to the 1.2-litre, 3-cylinder mFalcon G80 aluminum engine with MPFI (Multipoint Fuel Injection System). Equipped with cutting-edge VVT (Variable Valve Timing), it is designed, developed and manufactured by Mahindra.

The boost can be felt even at low revs, with generous torque that makes overtaking and ascents so much easier. The KUV100 is just like you – unstoppable.

Maximum power: 82 hp (61kW) at 5,500 rpm

Maximum torque: 115 Nm at 3,500 rpm



TRIED AND TESTED ON ROADS AROUND THE WORLD

Loyal to Mahindra's off-road DNA, the suspension has been tested on the world's most tortuous routes. The result is an advanced system, geometrically perfected to ensure comfort, safety and control at the wheel. All in compact dimensions, to keep the footprint and the weight down.

Front suspension:

independent, McPherson strut with dual-action support, with coil springs and hydraulic gas-charged shock absorbers

Rear suspension:

semi-independent twist beam with coil springs and hydraulic gas-charged shock absorbers



MAKING JOURNEYS FUN

Every journey, even if it's just between the home and the office, should be fun. That's why the KUV100 is so high-spec, designed to meet needs both large and small. From the recharging of the electronic devices to the parking sensors, and from the infotainment system to the electronic management of descents and hill starts, nothing has been neglected, so as to enhance your comfort, and to make driving – and living your life – easier.

Keyless door opening and push-button start/stop (K8)

Just approach the car with the key in your pocket and touch the handle to open the doors. And a simple push of the button will start the engine. It doesn't get any easier!



Easyparking system with parking sensors

Parallel parking, getting into the tightest of spots, being aware of obstacles that cannot be seen out of the rear-view mirror – all of these problems are things of the past...leave it to Easyparking.



Hill Descent Control

Even on steep, bumpy slopes, the KUV100 maintains a constant speed. The ABS and ESP systems control the speed of each wheel.



Hill Hold Control

This system is triggered during hill starts and keeps the brake on for a few seconds even when your foot is taken off the pedal. This avoids the complex action of brake / clutch / accelerator.



FEATURE		
Engine	3 cylinders, 12 valves, MPFI, Gasoline, Dual Variable Valve Timing (VVT) aluminium body	
Cubic capacity/N° cylinders and type	1.198 cc / 3 in line	
Max gross power KW (CV)	61 (82) @ 5.500 r/min	
Max gross torque	115 @ 3.500 - 3.600 r/min	
Top speed	148 km/h	
Gear box	Manuale - 5 marce + R.M.	
Tyres/Wheels	185/60 R15 / Alloy	
Suspension	Front	Independent McPherson strut with dual path mounts, coil spring and hydraulic gas charged shock absorber
	Rear	Semi Independent Twist beam with coil spring and hydraulic gas charged shock absorber
Traction	Front (FWD)	
Brakes	Front	Disc
	Rear	Drum
Body	Monocoque construction with 5 doors	
Seats	5	
Steering wheel	5,05 m	
Fuel	Gasoline	

VEHICLE DIMENSIONS	Overall Length	3.700 mm
	Overall Width (excluding OVRM)	1.727 mm
	Overall Height	1.655 mm
	Wheelbase	2.385 mm
	Approach angle	20°
	Departure angle	29°
	Ramp angle	16,4°
	Fuel tank capacity	35 litri
	Kerb weight	1.190 kg
	Gross vehicle weight	1.610 kg
BOOT	5 seats configuration	243 litre
	Rear seats folded	473 litre
CONSUMPTION	Urban	7,5 (litres/100 km)
	Extra-urban	5,4 (litres/100 km)
	Combined	6,2 (litres/100 km)
	CO ₂ Emission	146 (g/km)
	Omologation	Euro 6

EQUIPMENT	K6+	K8		K6+	K8		K6+	K8
SAFETY			Power windows on all doors	✓	✓	Internal rear view mirror with day/night function	✓	✓
Dual Airbags (Driver & Passenger)	✓	✓	ORVM electrically adjustment	✓	✓	Keyless	-	✓
ESP + TCS (Traction Control System)	✓	✓	Illuminated key ring	✓	-	Push-button start/PKE	-	✓
ABS+ EBD (Electronic Brake-force Distribution)	✓	✓	Foldable rear seat	✓	✓	STYLE		
Collapsible steering column	✓	✓	Follow-me home headlamps	✓	✓	Alloy wheels 15" (4)	✓	✓
Hill Hold Control	✓	✓	Cooled glove box	-	✓	Fabric insert on door trims	-	✓
Hill Descent Control	✓	✓	Central locking with remote	✓	✓	Seat upholstery	✓	✓
Child safety locks on rear doors	✓	✓	Adjustable headrests	✓	✓	Body-coloured bumpers	✓	✓
Speed sensing automatic door locks	✓	✓	Sunglass holder	✓	✓	Rear spoiler	✓	✓
Automatic hazard warning lights (on crash, panic braking or hood opening)	✓	✓	1 litre bottle holder in all doors	✓	✓	Roof rails	✓	✓
Safety belts with height adjustment (front seats)	✓	✓	Boot opening operated from inside	✓	✓	Body-coloured ORVMs	✓	✓
Door ajar warning	✓	✓	Rigid luggage cover	✓	✓	Wheel arch cladding	✓	✓
Anti-intrusion sidebar	✓	✓	LED interior lamps (Roof Lamp)	✓	✓	Front painted door handles	✓	✓
Rear wiper	-	✓	Puddle light on all doors	-	✓	Spare wheel standard size	✓	✓
Rear demister	✓	✓	TECHNOLOGY			Vanity light	-	✓
Anti theft security alarm	✓	✓	Infotainment System with 3.5" display screen, inbuilt DIS, Bluetooth audio, handsfree call, USB, AUX	✓	✓	Floor mat	-	✓
ISOFIX for child seat mounts on rear seats	✓	✓	4 speakers and 2 tweeters	✓	✓	OPTIONAL		
COMFORT			Steering mounted audio and phone controls	✓	✓	Front central armrest	-	✓
Air conditioning	✓	✓	Engine Immobilizer	✓	✓	Metallic paint	✓	✓
Electric power steering	✓	✓	Rear parking sensors	✓	✓	Pearl paint	✓	✓
Steering wheel adjustable in height	✓	✓	Fog lamps	✓	✓	Dual tone paint (only roof)	✓	✓
Height adjustable driver seat	✓	✓	Headlight Height Adjustment	✓	✓	Dual tone paint plus	-	✓
						Floor mat	✓	-



Flamboyant Red

Fiery Orange

Pearl White

Dazzling Silver

Designer Grey

Midnight Black

DUAL TONE / DUAL TONE PLUS



Flamboyant Red/
Metallic Black

Fiery Orange/
Metallic Black

Pearl White/
Metallic Black

Dazzling Silver/
Metallic Black



* Conditions and warranty limitations as indicated in warranty manual.

The manufacturer reserves the right to make changes to the features, specifications and prices of the models shown. The images are for illustrative purposes only. Due to printing limitations, the actual colours may be different from those reproduced here.



UP THERE. WHERE I NEVER THOUGHT I COULD REACH

Mahindra Italy is part of an international group that operates in various sectors: vehicles, agricultural machinery, information technology, commercial and financial services, and infrastructural development. It is a group that has been making cars since 1945, with a view to enhancing the quality of life of those who drive them. This is what the group's motto – **"Rise"** – is all about. **Raising your expectations**, going beyond your limits, realizing your dreams and always aiming higher.

This is what Mahindra has done, and it is what its customers do every day, at the wheel of vehicles that are driven on roads right around the world.

DEALER

www.mahindra.it - info@mahindra.it
tel. 06.93490043/51



Mahindra
Rise.